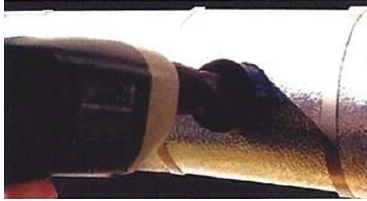


Installation Procedures for the TML, TMLX, System II and V Inspection Ports

Cut Hole With Hole Saw

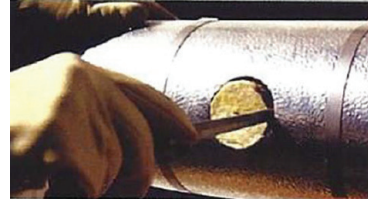
1.



Cut hole through insulation cladding with hole saw the size of which corresponds with the plug size to be installed.

Remove Insulation

2.



Remove insulation and clean external surfaces.

Insert Sealing Flange

3.



Insert the sealing flange portion of the inspection port into the pre-cut hole in the insulation cladding. On smooth metal the cladding should fit between the outer lip and the first locking undercut. For corrugated applications it should be held into position with the lower locking undercut.

Replace Insulation

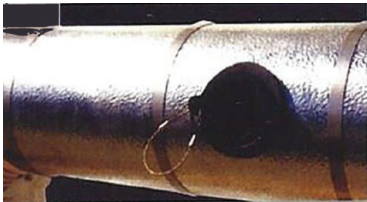
4.



Insert insulation into hole. Flexible insulation is recommended such as fiberglass or mineral fiber.

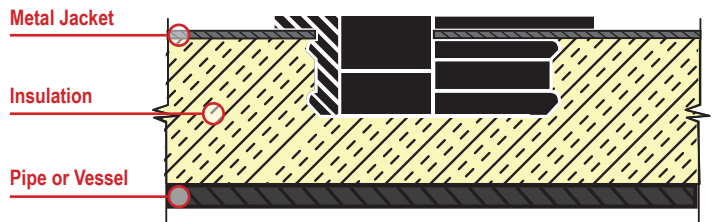
Insert Cap

5.

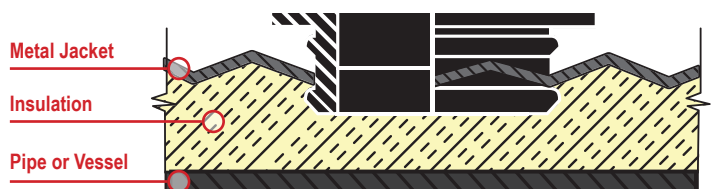


Insert Cap completely.

Installation on Smooth Surface

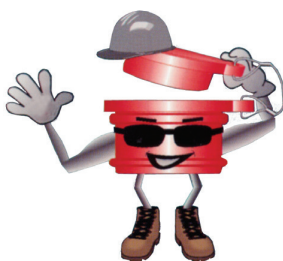


Installation on Corrugated Surface



IPS

INSPECTION PLUG STRATEGIES, LLC



Installation Procedure for TMLX-SP Inspection Port

1. Align cardboard template onto area where inspection port is to be installed. Either trace around template for cutting area or remove protective cover from tape on template and stick to surface to cut around.
2. Cut out the metal exactly to the shape of the template with tin snips.
3. Remove insulation using a utility knife and clean surface.
 - a. Cut small groove into insulation behind jacket to accommodate sealing flange of plug.



4. Insert the sealing flange of the inspection port into the pre-cut hole in the insulation cladding. On smooth metal the cladding should fit between the outer lip and then first locking undercut. For corrugated applications it should be held into position with the lower locking undercut.
5. Silicone and/or screws are recommended to achieve the best watertight seal.
6. Place insulation into the hole. Flexible insulation such as aerogel, fiberglass or mineral wool is recommended.
7. Insert cap completely.